

Name: \_\_\_\_\_  
 Address: \_\_\_\_\_  
 City: \_\_\_\_\_ State: \_\_\_\_\_ Zip Code: \_\_\_\_\_  
 County: \_\_\_\_\_

Date: \_\_\_\_\_  
 Home Phone: \_\_\_\_\_  
 Cell Phone: \_\_\_\_\_  
 Email Address: \_\_\_\_\_  
 Salesperson: \_\_\_\_\_

**Spa Brand and Model:** \_\_\_\_\_

**Cover Style\*:**

Standard: (4" - 2" Taper)

Deluxe: (6" - 4" Taper)

FRP Fiber: (5" - 3" Taper)

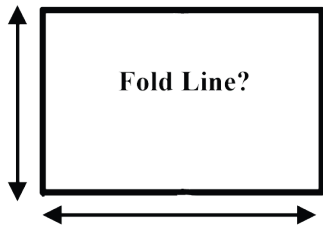
  
  


**Color:** \_\_\_\_\_

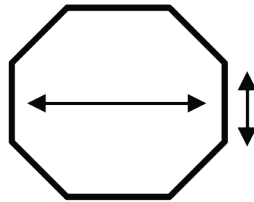
**Cover Type:** (Please Circle)

*Please write dimensions next to or on arrows*

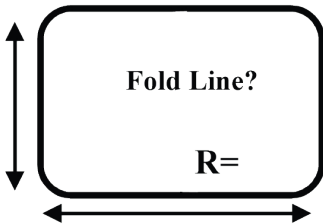
**Rectangle / Square**



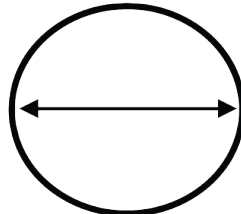
**Octagon**



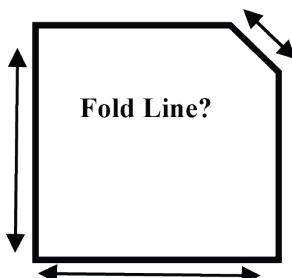
**Radius Corners**



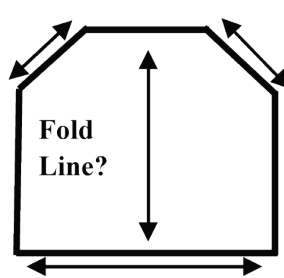
**Circle**



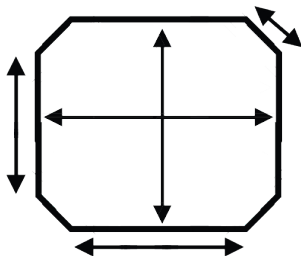
**One Cut Corner**



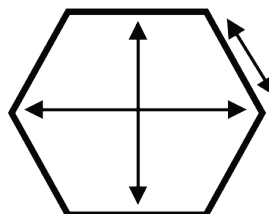
**2 Cut Corners**



**4 Cut Corner**



**Hexagon**



\* All Cover thicknesses are approximate.

**Other Dimensions:**

Length: \_\_\_\_\_

Width: \_\_\_\_\_

**Skirt:** (3" Standard): \_\_\_\_\_

**Corners:**

Radius: \_\_\_\_\_

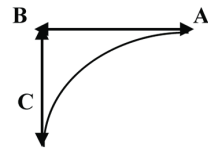
Square: \_\_\_\_\_

**Radius Corners**

1. Use two rulers to extend the sides of your spa to a point where the sides would have met (Point B) if the corner had been square.
2. Points A & C are where the curve ends on the spa.
3. The radius is the distance in inches from "B to A" or "B to C" - whichever is SMALLER.

**OR**

Trace the outside curve and fax it to us.



**Cover Cost:** \_\_\_\_\_

\_\_\_\_\_ **Cover Lift:** \_\_\_\_\_

**Other Items:** \_\_\_\_\_

**Delivery Charge:** \_\_\_\_\_

**Subtotal:** \_\_\_\_\_

**Tax:** \_\_\_\_\_

**Total:** \_\_\_\_\_

**Non-Refundable Deposit:** \_\_\_\_\_

**Balance Due:** \_\_\_\_\_

*I authorize the cover to be made as specified. All covers come with one handle and two straps on two sides. (We cannot control exact locations of straps or handles.) Once order is placed, there are no refunds. Covers taken from current inventory are not returnable once box is opened.*

**Approximate Arrival Date:** \_\_\_\_\_ **Customer Signature:** \_\_\_\_\_ **Date:** \_\_\_\_\_